

Alberta NAWMP Partnership

2013-2014 PROGRESS REVIEW

APRIL 2013 TO MARCH 2014



Alberta
NAWMP
Partnership

*North American Waterfowl
Management Plan*





Contents

Preface: A Major Milestone for Alberta's Wetlands	3
NAWMP in Alberta	4
Who is Alberta NAWMP?	5
Alberta NAWMP Partnership Structure	6
Alberta NAWMP Partnership Committees, 2013-14	6
The Prairie Habitat Joint Venture's Path to 2020	7
Cooking up Collaboration for Wetland Restoration	8
A Dollop of Great Information Mixed with a Tasty Breakfast	9
A New Policy for Alberta Wetlands	10
Pintail Banding to Enhance Conservation & Management	11
Committee Reports, 2013-14	12
Board of Directors	12
Management Committee	12
Communications Sub-committee	12
Policy Support Sub-committee	12
Contributions to NAWMP in Alberta, 2013-14 and 1986-2014	13
Activity Expenditures and Habitat Accomplishments, 2013-14 and 1986-2014	16
Cooperators	17

ALBERTA NAWMP VISION

Healthy prairie, parkland and boreal landscapes that support sustainable bird populations and provide ecological and economic benefits to society.

ALBERTA NAWMP MISSION

Provide leadership to achieve healthy and diverse waterfowl and other bird populations through conservation partnerships. These partnerships strive for sustainable and responsible management of the landscape taking into account social, economic and environmental factors.

CITATION:

Alberta NAWMP Partnership. 2014. Alberta NAWMP Partnership 2013-2014 Progress Review: April 2013 to March 2014. Ducks Unlimited Canada, Edmonton, AB. Alberta NAWMP-065. 20 pp.

All photographs in this publication are courtesy of Ducks Unlimited Canada unless otherwise specified.

Copyright © 2014 Alberta NAWMP Partnership

Printed in Canada

Preface: A Major Milestone for Alberta's Wetlands

Alberta's wetland community celebrated a major accomplishment in September 2013 with the public release of the new Alberta Wetland Policy. The Honourable Diana McQueen, then Minister of Environment and Sustainable Resource Development, announced: "A strong and flexible wetland policy is integral to responsible environmental management, and I am proud of the dedication of many government staff and stakeholders who got us here today. This policy provides the certainty, consistency and predictability we need to effectively manage wetlands across the province well into the future."

The new policy clearly acknowledges the importance of wetlands in the province, and sets priority and direction for planners and decision-makers when development pressures encounter wetlands (see *A New Policy for Alberta Wetlands* in this *Progress Review*). This is great progress and bodes well for Alberta's wetlands. I am confident that the Alberta North American Waterfowl Management Plan (Alberta NAWMP) partnership will play a significant role in supporting implementation and monitoring of this policy across many fronts: technical, programming and especially networking of wetland professionals. The future of Alberta's wetlands looks bright, to me.

Why such interest in policy within the Alberta NAWMP community? In its early years, Alberta NAWMP's plans noted the policy arena as important, but policy-related activity was somewhat overshadowed by the large, project-based stewardship component. Although we achieved remarkable project accomplishments into the millions of wetland acres, wetland losses remained significant across the province. It became clear that we needed to elevate our efforts on supporting wetland policies. Since then we have launched studies to better understand the scale, nature and impacts of wetland losses in Alberta. Though the initial intent was to assist Alberta NAWMP planners, the information was also shared with policy developers.

In addition to the new Alberta Wetland Policy, this past year was marked by many other important advances for the Alberta NAWMP partnership. A key step forward is the new Prairie Habitat Joint Venture Habitat Implementation Plan for 2013 to 2020. This plan is being developed through the collaboration of many people in the Alberta NAWMP partnership and our counterparts in Manitoba and Saskatchewan. It will guide a complex mix of habitat programming, science, communication and policy activities, and rally multiple partners for the next seven years (see *The Prairie Habitat Joint Venture's Path to 2020*).

Alberta NAWMP's primary habitat program delivery partners – Ducks Unlimited Canada and Nature Conservancy of Canada – secured an additional 6,953 acres of wetlands and associated uplands in 2013-14, raising the cumulative total to over 2.78 million acres (see *Habitat Accomplishments* table). This *Progress Review* profiles a large wetland restoration pilot project among new partners at the Blackfoot Grazing Reserve (see *Cooking up Collaboration for Wetland Restoration*).

In *Pintail Banding to Enhance Conservation & Management*, we learn about Environment Canada's program to attach leg bands to northern pintails and track their recovery by hunters. The information from this program will help inform pintail conservation efforts in North America and give us more information about where pintails breeding in Alberta spend their fall and winter.

This *Progress Review* also highlights the latest Alberta NAWMP Executive Breakfast Meeting (see *A Dollop of Great Information Mixed with a Tasty Breakfast*). Held about every two years, these convenient, concise and classy events are designed to help Government of Alberta executives and senior managers learn more about the value of Alberta NAWMP to their departments.

Another valuable communication tool for Alberta NAWMP is its Wetland Forum series. The Communications Sub-committee organized two forums in 2013-14, bringing together wetland professionals to discuss issues, consider new outlooks and identify opportunities to collaborate.

The Policy Support Sub-committee continued its diverse activities that add value to wetland-related policies. In 2013-14, key projects included: science support for the new Alberta Wetland Policy, a wetland social values survey, and market-based tools to encourage wetland restoration and upland habitat improvements.

On behalf of Alberta NAWMP, we are very appreciative of the many agencies and individuals, including Alberta landowners, who have been involved with NAWMP this past year: your participation is our measure of success.

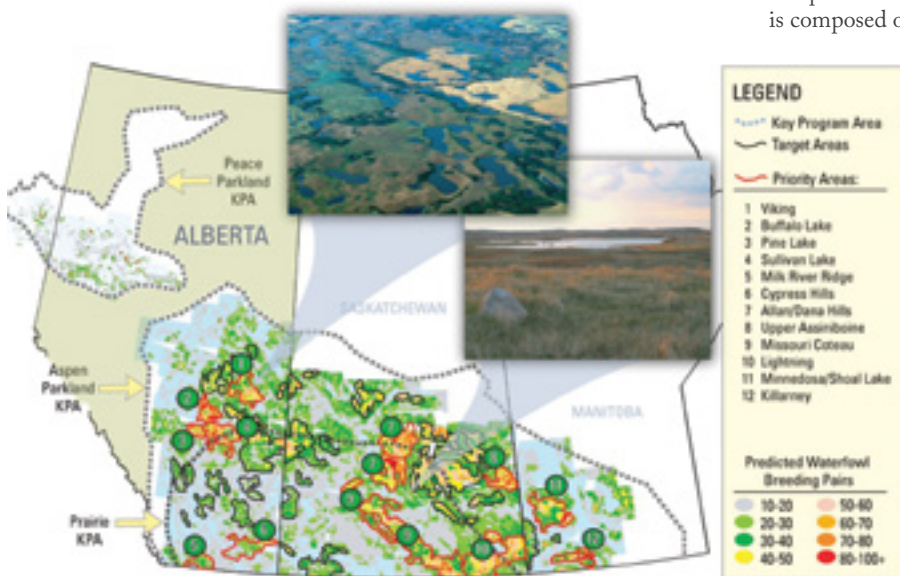
I am pleased to present the *Alberta NAWMP Partnership 2013-2014 Progress Review*. ●

Ron Bjorge
Chair, Board of Directors, Alberta NAWMP Partnership

NAWMP in Alberta

Since its inception in 1986, the North American Waterfowl Management Plan (NAWMP) has forged a landmark partnership between Canada, the United States and Mexico for the conservation of wetland and associated upland habitats to sustain continental waterfowl populations. NAWMP regularly updates and reenergizes its Plan. The latest version, called the 2012 NAWMP Revision, provides a springboard for action across North America.

NAWMP's continental vision defines and prioritizes geographic regions based on their biological values for waterfowl and other wetland-associated birds. It works through coordinated initiatives that enhance regional and continental priorities, using a collaborative approach at local, regional, national and international levels.



Alberta NAWMP's key program and target areas within the PHJV's Prairie-Parkland region

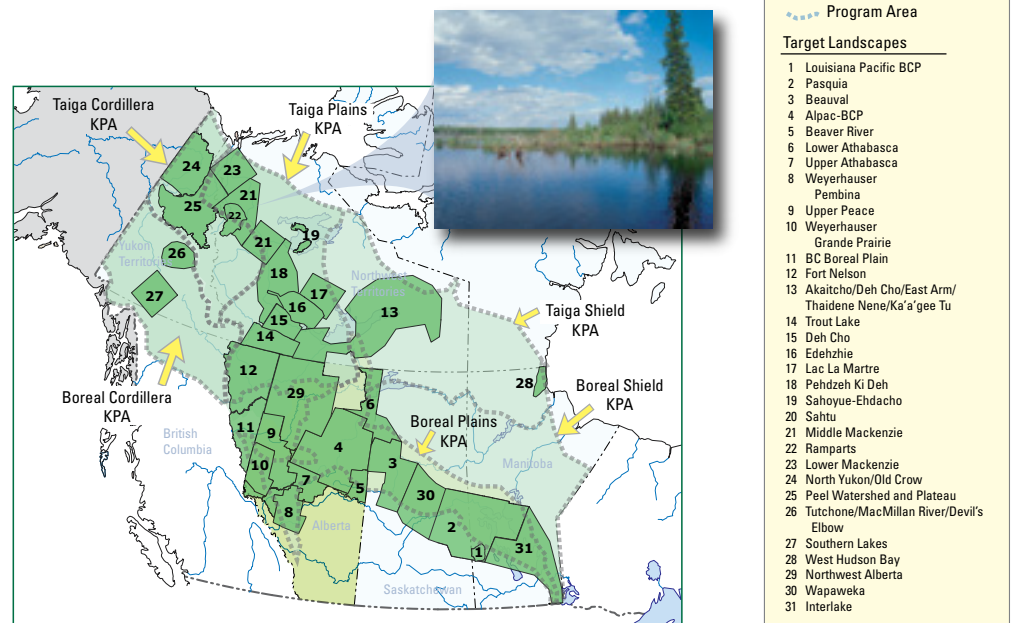
The 2012 Revision continues NAWMP's focus on conserving waterfowl populations and their key habitats. What is new is a greater emphasis on the essential role of hunters, other conservationists and the general public.

NAWMP achieves its goals through voluntary regional partnerships that implement local actions. The Prairie Habitat Joint Venture (PHJV) is the regional NAWMP partnership that supports provincial NAWMP partnerships in Alberta, Saskatchewan and Manitoba.

Just as NAWMP regularly updates its Plan, so does the PHJV. A series of Habitat Implementation Plans have guided the PHJV since 1986. The latest version covers 2013 to 2020 (see *The PHJV's Path to 2020*). This new Plan is aligned with the 2012 NAWMP Revision. It also expands the PHJV's work in several areas, including an increased emphasis on the Western Boreal Forest.

The provincial NAWMP partnership in Alberta – Alberta NAWMP – is composed of one federal and two provincial government departments, and two non-government agencies. It is directed by a Board of Directors and Management Committee, assisted by Policy Support and Communications sub-committees. All committees include representatives from each partner agency.

Alberta NAWMP coordinates in-province joint projects, communications, planning and policy support research, and facilitates funding options among the partners. Its work is guided by the Alberta component of the PHJV's Plan. The 2013-20 Plan will provide a framework for Alberta NAWMP to rally around, renew its commitment and anchor its future investments upon. ●



Alberta NAWMP's key program and target areas within the PHJV's Western Boreal Forest region



Who is Alberta NAWMP?

Collaboration is the foundation for successful wetland stewardship, and Alberta NAWMP is all about collaboration. It is a partnership of three government and two non-government agencies that have a responsibility for Alberta's wetlands as part of their individual mandates. The partners seek out collaborative opportunities with each other and with regional and local agencies and other stakeholders. These collaborative networks build on and enhance good work that is already happening, and take on new initiatives that might not otherwise happen. Together, the Alberta NAWMP partners and their collaborators achieve greater progress towards shared wetland goals.

How wetland landscapes relate to each partner agency's roles, objectives and responsibilities:

GOVERNMENT

Alberta Agriculture and Rural Development consists of the Department of Agriculture and Rural Development, Agriculture Financial Services Corporation and the Alberta Livestock and Meat Agency Ltd. One of the ministry's core businesses is to provide the frameworks and services necessary to enable a market-driven, environmentally responsible agriculture and food industry in Alberta. Its other core businesses are: food safety; plant health, and animal health and welfare; and rural development.

Alberta Environment and Sustainable Resource Development, as proud stewards of air, land, water and biodiversity, will lead the achievement of desired environmental outcomes and sustainable development of natural resources for Albertans.

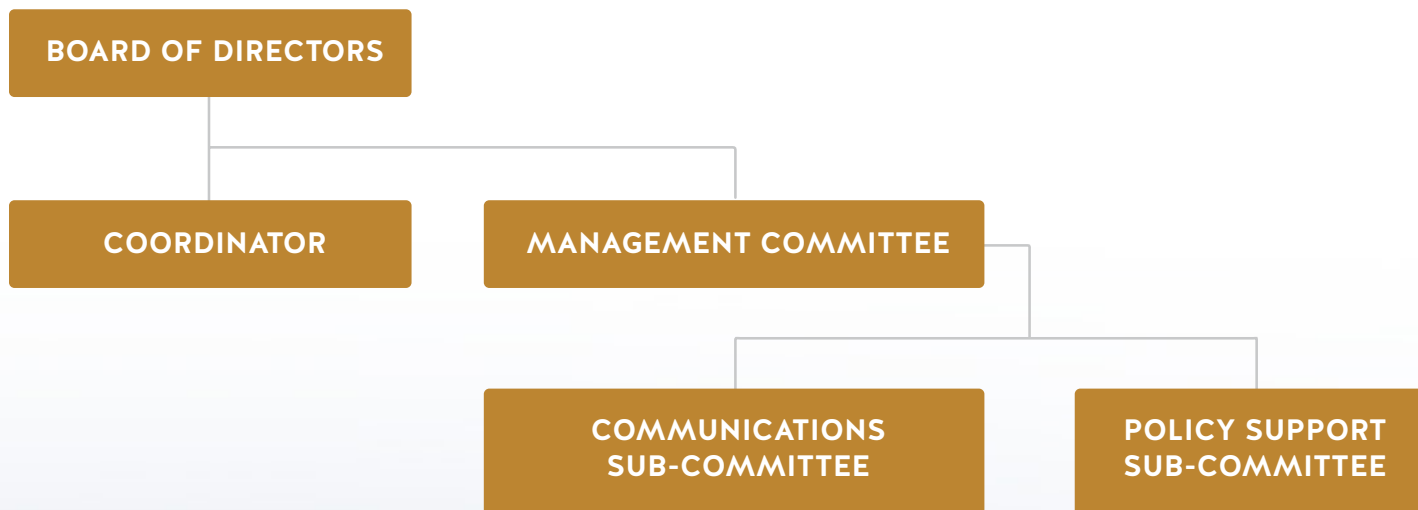
Environment Canada strives to preserve and enhance the quality of the natural environment, including water, air, soil, flora and fauna, conserve Canada's renewable resources, conserve and protect Canada's water resources, and coordinate environmental policies and programs for the federal government.

PRIVATE, NON-PROFIT

Ducks Unlimited Canada aims to achieve a mosaic of natural, restored and managed landscapes capable of perpetually sustaining populations of waterfowl and other wildlife by conserving, restoring and managing wetlands and associated habitats.

Nature Conservancy of Canada, in partnership with corporate and individual landowners, works to achieve the direct protection of Canada's most important wild spaces through property securement and long-term stewardship of these properties, maintaining critical lands and waters for wildlife and ensuring clean air and water for our future generations. ●

Alberta NAWMP Partnership Structure



Alberta NAWMP Partnership Committees, 2013-14

BOARD OF DIRECTORS

Per Andersen, Nature Conservancy of Canada
 Ron Bennett, Environment Canada
 Ron Bjorge (Chair), Alberta Environment and Sustainable Resource Development
 Len Kryzanowski, Alberta Agriculture and Rural Development
 Perry McCormick, Ducks Unlimited Canada

MANAGEMENT COMMITTEE

Per Andersen, Nature Conservancy of Canada
 Michael Barr (Chair), Alberta NAWMP Coordinator
 Ron Bennett, Environment Canada
 Barry Bishop, Ducks Unlimited Canada (Prairies)
 Jason Caswell, Alberta Environment and Sustainable Resource Development
 Dale Chrapko, Alberta Agriculture and Rural Development
 Alain Richard, Ducks Unlimited Canada (Boreal)
 Tom Slater, Alberta Environment and Sustainable Resource Development

POLICY SUPPORT SUB-COMMITTEE

Per Andersen, Nature Conservancy of Canada
 James Benkie, Agriculture Financial Services Corporation
 Ron Bennett, Environment Canada
 Gavin Berg, Alberta Environment and Sustainable Resource Development
 Jason Cathcart, Alberta Agriculture and Rural Development
 Gerry Haekel (Chair), Alberta Environment and Sustainable Resource Development
 Thorsten Hebben, Alberta Environment and Sustainable Resource Development
 Tracy Scott, Ducks Unlimited Canada

COMMUNICATIONS SUB-COMMITTEE

Roger Bryan, Alberta Agriculture and Rural Development
 Jaimee Dupont, Nature Conservancy of Canada
 Cory Habulin (Chair), Alberta Environment and Sustainable Resource Development
 Jill Mooney, Ducks Unlimited Canada
 Suzanne Vuch, Environment Canada

COORDINATOR

Michael Barr, Ducks Unlimited Canada

The Prairie Habitat Joint Venture's Path to 2020

PLANNING WITHOUT ACTION IS FUTILE, ACTION WITHOUT PLANNING IS FATAL. – CORNELIUS FICHTNER

Since the Prairie Habitat Joint Venture (PHJV) was created in 1986, it has been guided by a series of Habitat Implementation Plans. The newest Plan is being finalized in late 2014. Developed collaboratively by partnerships of conservation agencies in Alberta, Saskatchewan and Manitoba, this Plan sets an exciting course to advance wetland and waterfowl conservation during the next seven years.

The Implementation Plans have evolved over the years to reflect changing conditions and new information. “We’ve taken stock of what programs were successful and what didn’t work very well, what we’ve learned about the biology of the birds and their responses to the different habitat programs, and how the landscape has changed with weather patterns and agricultural market conditions,” says PHJV Science Committee Chair Dr. Bob Clark of Environment Canada.

Development of the new PHJV Plan has followed a ‘bottom-up’ approach, whereby a team from each province has generated programs that are practical and relevant to the province. The Alberta team is composed of people from the Alberta NAWMP partner agencies. The team reviewed priority areas, considered conservation program options, and set corresponding objectives. Scenarios were then evaluated with Ducks Unlimited Canada’s computer models to select programs most likely to produce desired landscape and bird population outcomes. Complementary land and water policy priorities were also identified and then combined with habitat program objectives to complete the plan. In turn, the three provincial plans were rolled-up to create the PHJV Plan.

The new Plan is composed of a Prairie-Parkland part and a Western Boreal Forest part.

For the Prairie-Parkland, the Plan involves resetting some ongoing efforts plus taking some new directions. “We’re adjusting wetland restoration objectives based on our experiences; it’s a challenge to restore wetlands in large numbers. Along with easement options, we also want to redouble efforts in Saskatchewan and Manitoba for dialogue to put policies in place that protect small wetlands. We want to encourage greater uptake of winter wheat, which has several benefits for wildlife when compared to spring-seeded cereals. And we’re going to continue with some permanent cover programs and efforts to retain valuable native prairie habitats,” notes Clark.

The Plan for the Prairie-Parkland goes beyond ducks. Although the PHJV remains committed to maintaining and restoring habitat for healthy waterfowl populations, recent advances in decision-support tools are enabling better incorporation of the needs of other waterbirds, such as grebes and rails, into habitat programs.

The Boreal component of the new Plan is more refined than in previous Plans, with clearer habitat program and policy actions. This expanded effort has been made possible by increased understanding of the distribution and abundance of waterfowl and other wetland-associated birds and of the impact of human activities in the Boreal.

Another new piece in the PHJV Plan is a heightened interest in the human dimensions of conservation. This direction was set out in the 2012 Revision of the continent-wide North American Waterfowl Management Plan. The Revision emphasizes building support for conservation among hunters, other conservationists and the general public, in addition to maintaining NAWMP’s longstanding foundations of waterfowl and habitat conservation.

Clark says, “Overall, it’s a great Implementation Plan. There is lots of important work to be done on the program and policy sides, but everyone is very committed and excited to really go after our conservation objectives.” ●

Cooking up Collaboration for Wetland Restoration

A pilot project to restore drained wetlands aims to enhance the rich waterfowl habitat in a portion of a multi-use park in east-central Alberta.

This project is a joint effort of Ducks Unlimited Canada (DUC), Alberta Tourism, Parks and Recreation (ATPR) and a group of cattle producers from the Blackfoot Grazing Association. Together they share an interest in ensuring a sustainable working landscape.

The park's official name is the Cooking Lake-Blackfoot Grazing, Wildlife and Provincial Recreation Area. It is under the jurisdiction of ATPR, which is interested in the pilot project because of the potential to enhance the area's conservation and habitat values. The producers who graze their cattle in the park's designated pastures are interested in how wetland restoration might influence their grazing activities.

And DUC is interested in restoring some excellent waterfowl habitat. The park lies within NAWMP's Big Hay/Bittern/Cooking Lake priority area, about 50 km east of Edmonton. The natural landscape is dotted with large and small wetlands, although many small basins were inadvertently drained when the grazing area was developed several decades ago. The associated uplands are in perennial grass cover, which is in very good condition because the cattle producers use sustainable grazing practices.

DUC's Barry Bishop says, "The area has well-managed grazing land, so when you restore the wetlands, the benefits to waterfowl are significant. The pair populations increase in that area, and their nest success is going to be very good because of the expanse of grass."

The pilot area is comprised of three blocks of pasture land, totalling about 1,200 acres. DUC identified over 100 drained wetlands in the three blocks and targeted 62 of them for restoration. In October 2013, DUC added earthen plugs to those basins to help restore their natural water levels. As well, DUC seeded forage on the plugs to prevent erosion and to minimize weed growth.

Bishop thinks the pilot project has win-win-win potential. Not only will wetland restoration enhance the area's habitat, which is a goal for both ATPR and DUC, but it will also likely have a neutral or positive effect on cattle production.


He explains, "The cattle producers were concerned about potential loss of grazing area, but given their low stocking rates and the small wetland restoration footprint – 62 basins affecting only about 5% of the pilot area – the restoration work should not have a noticeable impact on grazing availability. As well, many of the restored wetlands are seasonal or temporary basins. So the restoration work might actually increase the amount of forage, as these naturally irrigated ponds produce enormous amounts of vegetation available for late-season grazing."

DUC and partners will be monitoring the effects of the restoration work in 2014 and the following years. ATPR will consider the pilot project's results to decide whether to proceed with further wetland restoration work in the park.

Bishop hopes the work will continue. "The potential in the rest of the park's grazing reserve is dramatic. In a preliminary assessment, DUC identified about 212 drained basins [in that portion of the park]. So we've just scratched the surface for restoring wetlands." ●

These are two of the many restored wetlands in a grazing reserve near Cooking Lake.

Photo Credit: Greg Elzinga, Parks Conservation Officer, Alberta Justice and Solicitor General



Alberta NAWMP Chair Ron Bjorge was one of the participants at the 2013 Breakfast Meeting.

A Dollop of Great Information Mixed with a Tasty Breakfast

Despite the wintry weather, over 30 Government of Alberta executives and senior managers attended the latest Alberta NAWMP Executive Breakfast Meeting on December 3, 2013. The participants learned more about the value of Alberta NAWMP, asked questions, enjoyed a fine breakfast, and still got off to work by 8:30.

“The idea to engage provincial government executive audiences in each Prairie Province came initially from the Prairie Habitat Joint Venture, the regional NAWMP partnership that supports provincial NAWMP partnerships in Alberta, Saskatchewan and Manitoba,” explains Michael Barr, Alberta NAWMP Coordinator. “Alberta NAWMP hosted its first event in 2008. The positive response to these events coupled with new executive staff have prompted repeat events about every two years since then.”

“Typically these Breakfast Meetings start at 7:30. The emphasis is on being quick and informative in a welcoming and casual setting, and holding the meeting at a very convenient venue because we know everybody has busy schedules and timelines. It’s been a successful format,” says Ron Bjorge, Alberta NAWMP Chair and an Executive Director in the Policy Division at Alberta Environment and Sustainable Resource Development (ESRD).

“The basic concept is to give a broader perspective to senior Government staff. We want to provide an increased level of awareness as well as a personal touch with the people involved,” explains Bjorge.

Barr adds, “The Breakfast Meetings engage Government executives and senior managers whose staff are involved in NAWMP committees

or attend NAWMP venues. Often the benefits of Alberta NAWMP aren’t obvious unless explained first-hand, and we can do that at these meetings. They see how Alberta NAWMP supports their departments’ policies, planning and program implementation, and better understand Alberta NAWMP’s relevance and value.”

For each Breakfast Meeting, Alberta NAWMP invites a variety of Government executives and senior managers from departments and agencies with responsibilities related to water, land and biodiversity resources. Guests share information, perspectives and a tasty breakfast with some of Alberta NAWMP’s Board of Directors and committee members, including representatives from all of the Alberta NAWMP partners. Cross-ministry and NAWMP synergies often emerge that are explored later by staff.

At the 2013 meeting, invitees included executives and senior managers from Alberta Agriculture, Food and Rural Development, ESRD and Alberta’s Land Use Secretariat, as well as Environment Canada, Ducks Unlimited Canada and the Nature Conservancy of Canada. The participants heard presentations about Alberta NAWMP’s history, organization, scope and funding sources. They also learned about its collaborative approach including examples of recent accomplishments in habitat conservation, science, policy support and communications, as well as opportunities for future joint efforts.

Bjorge notes that this meeting series is one of several key activities that help inform Government executives and senior managers about the Alberta NAWMP program. “These activities include official communications like our annual *Progress Review*, the Breakfast Meetings, the staff work, and some written communications. All of these help reinforce the importance of the Alberta Government’s contributions to Alberta NAWMP: in staff time to participate on NAWMP committees and activities, in other types of in-kind support, and in cash support towards the Alberta NAWMP program.” ●

A New Policy for Alberta Wetlands

The Alberta Wetland Policy, released in September 2013, provides a strategic framework for protecting, conserving and restoring Alberta's wetland resources. It addresses some gaps and challenges in the previous interim policy, and it facilitates an informed, consistent approach to wetland management. It also positions Alberta as a leader in wetland management on the Prairies.

One of the major advances with the new policy is its comprehensive scope. "The interim policy was focused on mineral wetlands, that is marsh ecosystems, in Alberta's White Area (the province's settled area). So it didn't cover peat-forming wetlands, such as bogs and fens, and it didn't cover the Green Area (crown lands)," explains Thorsten Hebben, Head of Surface Water Policy at Alberta Environment and Sustainable Resource Development (ESRD). "The new policy covers the entire province and all the major wetland types found in Alberta – bog, fen, swamp, marsh and shallow open water ecosystems."

Like the interim policy, the new policy follows an 'avoid, minimize, and replace' hierarchy. That is, avoiding wetland impacts is the preferred option, followed by minimizing impacts when avoidance isn't possible, and, as a last resort, replacing lost wetland area. The new policy improves on this by providing better guidance manuals, clearer criteria and additional tools for decision-making on wetland development and for determining replacement requirements, if wetlands are lost. These improvements will enable more informed, consistent and predictable decision-making processes.

An underlying principle of the new policy is that it will consider the relative value of the wetland on the landscape. Hebben notes, "The interim policy focused on a spatial context. For every hectare of

wetland lost as part of a development approval, the proponent was required to pay for restoration of three hectares of wetland elsewhere. In most instances, there was no consideration of the wetland's role in the landscape relative to water quality enhancement, flood mitigation potential, biodiversity – all those key factors that contribute to the value of wetlands."

Under the new policy, a standardized, objective tool will be used to determine a wetland's value. It will assess the wetland's functions, benefits and area, and will consider those factors in a regional context. "For example, in a region with a high historical loss of wetlands, we may want to disincent further wetland losses by elevating the relative value of the remaining wetlands," says Hebben.

The policy's implementation begins in the White Area on September 1, 2014, and in the Green Area on September 1, 2015. The tools, systems and guidance documents will be finalized and introduced in a phased process in the coming months. This process will allow time for stakeholders to test the new tools and systems, and provide feedback if any final adjustments are needed.

Ducks Unlimited Canada (DUC) is one of the stakeholder agencies providing input during the implementation process. "DUC looks forward to working with the Alberta Government towards the protection of wetlands across the province to benefit Albertans and wildlife," says Perry McCormick, Provincial Manager of Operations for DUC Alberta. "The true test will come in the implementation phase. To achieve the policy goal and outcomes, there needs to be compliance and effective enforcement relating to all wetland impacts."

"The Alberta Wetland Policy is a very significant step in conservation and long-term management of the province's wetlands, and therefore is a significant step in delivery of NAWMP programming in Alberta," says Ron Bjorge, Alberta NAWMP Chair and an Executive Director in the Policy Division of ESRD.

Alberta NAWMP Coordinator Michael Barr adds, "This new policy positions Alberta among the leaders on the wetland front in North America; neither of the other Prairie Provinces and only a few provinces and states have a wetland policy. The ripple effect will be to encourage other jurisdictions that are also developing or considering wetland policies across the continent." ●



Waterfowl banding at the south-central Alberta site

Pintail Banding to Enhance Conservation & Management

The populations of dabbling duck species on the Canadian prairies plummeted during drought conditions in the 1980s and early 1990s. When wetter weather returned, most species rebounded. Except northern pintails. As part of the efforts to understand why this species isn't bouncing back and how to help it recover, Environment Canada's Canadian Wildlife Service (CWS) is attaching leg bands to northern pintails and tracking their recovery by hunters.

From the 1970s to 2004, CWS banded pintails as an incidental species during its mallard banding operations. Then in 2005, CWS shifted the focus of its prairie duck banding efforts to pintails.

"We get a lot of useful information from banding and recovery of northern pintails," explains Blake Bartzen, a Biologist with CWS and new coordinator for the pintail banding program.

"For example, based on where and when pintails are harvested, we can estimate survival rates and examine how those rates vary over time and space. We can also look at how those rates may vary between males and females, and juveniles and adults. That information helps us determine if there's some factor limiting survival. ... We can also compare survival before and after conservation or management activities to help determine the effectiveness of the activities."

Alberta NAWMP and Alberta Environment and Sustainable Resource Development (ESRD) are new partners in the banding program. Since 2012, they have provided funding to support a third banding site in

south-central Alberta to complement two existing banding sites, one on the Alberta-Saskatchewan border and one in south-central Saskatchewan.

"Having three sites offers advantages," says Jason Caswell, Provincial Game Bird Specialist with ESRD. "The additional site provides a better chance of achieving the program's target of 6,000 banded pintails per year, a target necessary to allow statistically valid estimates of pintail survival. Another benefit is that it spreads the banding sites across Canada's prairie region, ensuring representation of pintails from each of the three flyways in the region."

He explains, "The pintails that nest in Alberta typically associate with the Pacific Flyway. In the Pacific Flyway, wintering pintails concentrate in California and are relatively prolific. Agencies in California and Alberta, and the Canadian Wildlife Service are all very interested in knowing more about Pacific Flyway migration and breeding associations." Caswell is assuming site leadership for the south-central Alberta site in 2014.

"Our pintail banding efforts to date have been successful as a result of international teamwork and the good work of many individuals and agencies, and support from stakeholders. It's our hope that this cooperative effort will continue in future years," says Bartzen.

Along with CWS, ESRD and Alberta NAWMP, other pintail banding partners include the California Waterfowl Association, Environment Canada's Science and Technology Branch, U.S. Fish and Wildlife Service, Ducks Unlimited Canada and Viterro. And in 2014, the Alberta Professional Outfitters Society is providing additional support for the south-central Alberta site.

This fall and winter, the researchers will evaluate the results of the prairie Canada pintail banding efforts to date. Bartzen says, "We hope to determine if we need to refine our future banding activities, for example, by having more or fewer banding sites or by shifting to particular regions where we're data deficient. And we may be able to provide insights into why pintail populations have not rebounded."

"The ongoing efforts of the Alberta NAWMP partners to conserve northern pintail habitat will benefit from the information emerging from the banding program," says Michael Barr, Alberta NAWMP Coordinator. ●





One of the 2013-14 Alberta NAWMP Wetland Forums, bringing together wetland professionals to share ideas

Committee Reports, 2013-14

BOARD OF DIRECTORS

Members are director-level executives from each partner agency. They are responsible for: defining Alberta NAWMP's vision, mission, goals and strategies; approving annual work plans and budgets; and ensuring accountability for work plans and budgets. They also facilitate information exchange and engagement opportunities between their own agency and Alberta NAWMP.

The Board of Directors met in April 2013, October 2013 and January 2014. At the April meeting, the Board reviewed and approved the 2013-14 Work Plan and Budget, and discussed Alberta priorities for the upcoming Prairie Habitat Joint Venture (PHJV) Habitat Implementation Plan update (see *The Prairie Habitat Joint Venture's Path to 2020*). The October meeting featured progress reports from the Policy Support and Communications Chairs plus a budget update. The January meeting focused on the PHJV Implementation Plan, scheduled for completion in late 2014. Most Board members also attended the December 2013 Executive Breakfast Meeting (see *A Dollop of Great Information Mixed with a Tasty Breakfast*).

MANAGEMENT COMMITTEE

Members are senior managers from each partner agency who facilitate integration of operational opportunities between their own agency and Alberta NAWMP. This Committee shares responsibility with the Alberta NAWMP Coordinator for project-based decision-making and day-to-day expenditures established in annual work plans and medium-term implementation plans.

The Management Committee met in April 2013, October 2013 and January 2014. At the April meeting, members developed the 2013-14 Work Plan and Budget for proposal to the Board. The October and January meetings were held jointly with the Board because the primary topic – the PHJV Habitat Implementation Plan update – involved reviewing both vision-related and operational aspects.

As well, a sub-group of the Management Committee formed a short-term task group that provided critical advice to the Coordinator in undertaking habitat scenario planning for the new PHJV Plan. Some Management Committee members also attended and made presentations at the December 2013 Executive Breakfast Meeting.

COMMUNICATIONS SUB-COMMITTEE

The Communications Sub-committee leads information sharing and event hosting and promotion for Alberta NAWMP-related initiatives. Members are communication experts from each partner agency.

The Communications Sub-committee met four times during 2013-14, with some supplementary conference calls. Its primary task was hosting of two Alberta NAWMP Wetland Forums: one in November 2013 and the other in March 2014. Both events involved coordination of many guest speakers and applied the Committee's signature innovative approaches. Both forums generated summary documents that were distributed to attendees. The Sub-committee also supported the Executive Breakfast event and preparation of Alberta NAWMP's annual *Progress Review*.

POLICY SUPPORT SUB-COMMITTEE

The Policy Support Sub-committee members monitor relevant policy developments in their agencies, identify research needs and seek synergies on wetland-related policies identified in Alberta NAWMP work plans. Members are senior policy specialists or analysts from each partner agency.

The Policy Support Sub-committee met three times in 2013-14, with periodic supplementary conference calls. Current policies relevant to Alberta NAWMP remain as: the provincial water strategy Water For Life, Alberta's Land-use Framework, Growing Forward 2, the provincial Ecosystem Services initiative, and Alberta's Climate Change Strategy. Key policy support projects advanced in 2013-14 included: science support for the new Alberta Wetland Policy (several projects), wetland social values survey, and progress on carbon credit protocols for wetland restoration and converting annual cropland to perennial forages, so the credits can be traded on Alberta's carbon offset market. ●

Contributions to NAWMP in Alberta, 2013-14 and 1986-2014

AGENCY TYPE	AGENCY	2013-14 ^a TOTAL	1986-2014 ^a CUM. TOTAL
Canadian Corporations		\$1,163,225	\$18,573,543
Canadian Education Institutions			\$300,279
Canadian Federal Government	Agriculture and Agri-Food Canada		\$38,532,523
	Canadian federal - unspecified		\$484
	Environment Canada - Canadian Wildlife Service	\$1,095,315	\$37,412,784
	Environment Canada - EcoAction 2000		\$8,276
	Environment Canada - Habitat Stewardship Program		\$3,655,828
	Environment Canada - Natural Areas Conservation Program	\$3,895,878	\$25,594,899
	Fisheries and Oceans Canada		\$3,000
	Human Resources and Skills Development Canada		\$18,761
	Millennium Bureau of Canada		\$1,120,100
	Natural Sciences and Engineering Research Council of Canada		\$194,736
	Parks Canada		\$54,660
	Public Works and Government Services Canada		\$500
		\$4,991,193	\$106,596,551
Canadian Not for Profit	Agriculture and Food Council of Alberta		\$275,000
	Alberta Beef Producers		\$954,531
	Alberta Conservation Association		\$4,305,488
	Alberta Conservation Tillage Society		\$125
	Alberta Ecotrust Foundation		\$22,542
	Alberta Environmental Farm Plan Company		\$240
	Alberta Fish and Game Association	\$290,839	\$1,476,995
	Alberta Native Plant Council		\$600
	Alberta Research Council		\$5,000
	Alberta Sport, Recreation, Parks & Wildlife Foundation	\$12,276	\$130,264
	Antelope Creek Habitat Development		\$5,000
	Canada Trust Friends of the Environment Foundation		\$5,500
	Canadian Circumpolar Institute		\$3,500
	Canadian Nature Federation		\$1,800
	Canadian non-government organizations - unspecified		\$180,264
	Climate Change Central		\$5,000
	Cropmasters		\$46,300
	Ducks Unlimited Canada	\$40,417	\$3,375,226
	Eastern Irrigation District		\$75,085
	Edmonton Community Foundation	\$17,616	\$23,834
	Edmonton Springer Spaniel Club		\$200

AGENCY TYPE	AGENCY	2013-14 ^a TOTAL	1986-2014 ^a CUM. TOTAL
	Federation of Alberta Naturalists		\$15,000
	George Cedric Metcalf Foundation		\$50,000
	*Imperial Oil Charitable Foundation	\$157	\$157
	Institute for Wetland and Waterfowl Research		\$5,500
	Izaak Walton Killam Memorial Scholarship		\$2,000
	James L. Baillie Memorial Fund		\$2,000
	Lakeland Industry & Community Association		\$14,051
	Land Stewardship Centre of Canada		\$18,000
	Nature Canada		\$1,128,000
	Nature Conservancy of Canada	\$272,509	\$4,890,084
	Peace Parkland Naturalists		\$600
	Project Second Life Society		\$6,000
	Richard H. G. Bonnycastle Graduate Fellowship		\$15,000
	Rocky Mountain Elk Foundation – Canada		\$4,500
	Samuel Hanen Society for Resource Conservation		\$350
	Shell Conservation Internship Program		\$7,296
	Shell Environmental Fund		\$25,123
	Southern Alberta Land Trust Society		\$613,119
	Sustainable Forest Management Network		\$20,000
	The Calgary Foundation		\$3,943
	The J.W. McConnell Family Foundation		\$6,999
	The Kahanoff Foundation		\$701
	The W. Garfield Weston Foundation		\$1,534
	United Farmers of Alberta		\$18,447
	Western Irrigation District		\$673,433
	Wildlife Habitat Canada	\$5,000	\$3,436,978
	World Wildlife Fund Canada		\$36,000
		\$638,814	\$21,887,309
Canadian Provincial & Territorial Governments	Agriculture Financial Services Corporation		\$446,527
	Alberta Agriculture and Rural Development		\$10,570,726
	Alberta Culture and Community Spirit		\$8,000
	Alberta Energy and Utilities Board		\$8,300
	Alberta Environment and Sustainable Resource Development	\$500,000	\$26,138,395
	Alberta Transportation		\$9,246
	Alberta Treasury	\$104,423	\$684,519
	Manitoba Habitat Heritage Corporation		\$45,317
	Saskatchewan Watershed Authority		\$10,000
		\$604,423	\$37,921,030

AGENCY TYPE	AGENCY	2013-14 ^a TOTAL	1986-2014 ^a CUM. TOTAL
Canadian Regional & Local Governments	Big Hay Lake Drainage District		(\$34,639)
	Bonnyville (Municipality of)		\$22,653
	Calgary (City of)		\$268,543
	Camrose County		\$14,907
	Carstairs (Town of)		\$96,000
	Edmonton (City of)		\$166,545
	Flagstaff County	\$500	\$5,575
	Grande Prairie (City of)		\$7,832
	Grande Prairie County		\$2,022
	Greenview (Municipal District of)		\$6,962
	Lakeland (County of)		\$2,800
	Lamont County		\$12,583
	Manawan Drainage District		\$34,750
	Medicine Hat (City of)		\$7,780
	Minburn County		\$63,191
	Newell County		\$28,750
	Ponoka County		\$2,310
	Red Deer County		\$1,811
	Rocky View County	\$203	\$345,498
	Special Areas Board		\$325
	St. Albert (City of)		\$17,820
	St. Paul County		\$6,989
	Stettler County		\$2,780
	Strathcona County		\$85,072
	Strathmore (Town of)		\$198,627
	Sturgeon County		\$68,085
	Sylvan Lake (Town of)		\$30,000
	Wheatland County		\$3,200
		\$703	\$1,468,771
Canadian Other	Canadian – unspecified	\$2,475,768	\$29,014,814
United States – All Sources	U.S. Fish and Wildlife Service, U.S. state governments, Ducks Unlimited Inc., Anonymous Foundation, other	\$5,977,441	\$251,310,456
International	Conservation International Bahamas		\$59,744
Grand Total		\$15,851,567	\$467,132,497

*New contributors in 2013-14.

a. Includes data from PHJV Alberta (Source: NAWMP National Reporting System).

Activity Expenditures and Habitat Accomplishments, 2013-14 and 1986-2014

AGENCY	ACTIVITY	EXPENDITURES 2013-14	HABITAT ACRES 2013-14	NET HABITAT ACRES 1986-2014
Ducks Unlimited Canada	Communication and education	\$320,726		
	Continuing habitat project operation	\$200,000		
	Coordination	\$799,032		
	Enhancement	\$1,090,439	6,194	1,037,695
	Evaluation	\$205,366		
	Management	\$3,248,560	11,063	2,545,681
	Policy support	\$71,945		
	Securement	\$2,658,180	5,346	2,303,265
	Stewardship	\$1,194,730	195,000	191,394
DUC Total Expenditures		\$9,788,978		
Environment Canada - Canadian Wildlife Service	Communication and education	\$3,066		
	Coordination	\$5,248		
	Evaluation	\$150,667		
	Policy support	\$8,333		
EC Total Expenditures		\$167,314		
Nature Conservancy of Canada	Communication and education	\$78		
	Coordination	\$13,288		
	Enhancement	\$315		72,041
	Management	\$547,050	102,887	977,938
	Reconnaissance and design	\$59,584		
	Securement	\$4,559,227	1,607	48,567
	Stewardship	\$590,644		
NCC Total Expenditures		\$5,770,186		
DUC, EC, NCC Total Expenditures, 2013-14		\$15,726,478		
DUC, EC, NCC Total <u>Secured</u> Acres, 2013-14 and 1986-2014			6,953	2,351,832
Other Alberta NAWMP Partners Total Net <u>Secured</u> Acres, 1986-2014				435,702
Alberta NAWMP Partners Grand Total Net <u>Secured</u> Acres, 1986-2014				2,787,534

Notes:

This table shows expenditures and habitat activities for the Alberta Prairie, Parkland and Peace Parkland biomes (Source: NAWMP National Reporting System). Due to differences in funding periods for the agencies and governments contributing to NAWMP, not all funds received each fiscal year are spent in that same year. As a result, yearly expenditures may not reconcile with funds contributed to date.

Activities:

- Communication and education: Communication activities in support of NAWMP partners (primarily Alberta, but also Prairie Habitat Joint Venture (PHJV), national and international NAWMP).
- Continuing habitat project operation: A project operation and maintenance endowment fund.
- Coordination: Partnership coordination and data administration (primarily Alberta, but also PHJV, national and international NAWMP).
- Enhancement: Activities supporting restoration and/or improvement of secured wetlands and associated uplands (e.g. earthen dam or ditch plug to restore a small wetland, upland conversion from cropland to grass, range improvement).
- Evaluation: Scientific or other assessment to inform conservation program priorities and actions, and measure conservation outcomes.
- Management: Maintenance of secured wetlands and associated uplands and their infrastructure.
- Policy support: Activities that identify or support development of policies benefiting wetlands (primarily Alberta, but also PHJV, national and international NAWMP).
- Reconnaissance and design: Activities to assess project feasibility and develop project plans.
- Securement: Activities supporting targeting, negotiating and signing long-term agreements (10 years to perpetuity), easements or purchases on wetland and associated upland habitat.
- Stewardship: Promotional activities (e.g. agricultural demonstration projects) that lead to adoption of environmentally beneficial and sustainable land-use practices.

Habitat Acres:

- Habitat Acres, 2013-14: Habitat acres secured, enhanced, managed or stewarded between April 1, 2013 and March 31, 2014.
- Net Habitat Acres, 1986-2014: Net cumulative total of habitat acres since 1986.

Cooperators

101105170 Saskatchewan Ltd.
 1187397 Alberta Ltd.
 Access Land Services Ltd.
 Access Pipeline Inc.
 Acquired Land Management Inc.
 Action Energy Inc.
 Action Land Consultants (2001) Ltd.
 Advance Land Services
 Advantage Oil & Gas Ltd.
 Agricore United
 Agriculture and Agri-Food Canada
 Agriculture and Agri-Food Canada - Prairie Farm
 Rehabilitation Administration
 Agriculture and Food Council of Alberta
 Agriculture Financial Services Corporation
 Aguila Exploration Consultants Ltd.
 Ainsworth Lumber Company Ltd.
 Alberta Agriculture and Rural Development
 Alberta Association of Municipal Districts and Counties
 Alberta Beef Producers
 Alberta Community Development
 Alberta Conservation Association
 Alberta Conservation Tillage Society
 Alberta Culture and Community Spirit
 Alberta Ecotrust Foundation
 Alberta Energy and Utilities Board
 Alberta Environment and Sustainable
 Resource Development
 Alberta Environmental Farm Plan Company
 Alberta Fish and Game Association
 Alberta Land and Lease Limited
 Alberta Municipal Affairs
 Alberta Native Plant Council
 Alberta Research Council
 Alberta Reduced Tillage LINKAGES
 Alberta Sport, Recreation, Parks and Wildlife Foundation
 Alberta Transportation
 Alberta Treasury
 Alberta-Pacific Forest Industries Inc.
 Alliance Pipeline Limited Partnership
 Alonsa Conservation District
 Alta Canada Energy Corporation
 Alta Energy Corporation
 AltaGas Services Inc.
 Amar Developments Ltd.
 Anadarko Canada Corporation
 Anderson Exploration Ltd.
 Anonymous Foundation
 Antelope Creek Habitat Development
 Antelope Land Services Ltd.
 Apache Canada Ltd.
 ARC Resources Ltd.
 Arctos Land Corporation
 Argent Energy Inc.
 Arizona (State of)
 Arnett & Burgess Oilfield Construction Ltd.
 Artek Exploration Ltd.
 Artemis Energy
 Artemis Exploration Inc.
 Aspen Endeavour Resources Inc.
 Assiniboine Watershed Stewardship Association
 ATCO Electric Ltd.
 ATCO Gas
 ATCO Structures & Logistics Ltd.
 Atlas Land Consultants Ltd.

Aurora Land Consulting Ltd.
 Avalanche Energy Limited
 Avid Oil & Gas Ltd.
 B P Canada Energy Company
 Barbeejay Supplies Ltd.
 BASF Canada Inc.
 Battle River Credit Union Ltd.
 Bayer CropScience Canada
 Bayer CropScience Inc.
 Baytex Energy Ltd.
 Beaver County
 Beaverbrook Development Inc.
 Beaverhill Lake Nature Centre
 Ben's Trucking and Landscaping
 Big Country Energy Services LP
 Big Hay Lake Drainage District
 Big Lake Environment Support Society
 Bighorn Land & Field Service Ltd.
 Birchcliff Energy Ltd.
 Bonavista Energy Trust Ltd.
 Bonavista Petroleum Ltd.
 Bonnyville (Municipality of)
 Bow River Irrigation District
 Bowest Consulting Ltd.
 Bowood Energy Corp.
 Boyd Petro Search
 Briggs Resources Ltd.
 British Petroleum Canada
 Britt Resources Ltd.
 Buffalo Resources Corp.
 Burlington Resources Inc.
 Byrne's Agri Service Ltd.
 Cabre Exploration Ltd.
 Cabrerra Resources Limited
 Calgary (City of)
 California Department of Fish and Game
 California (State of)
 Cameron Development Corporation
 Camrose County
 Canada Capital Energy Corporation
 Canada Malting Co. Ltd.
 Canada private - unspecified
 Canada Trust Friends of the Environment Foundation
 Canada West Land Services Ltd.
 Canadian Cattlemen's Association
 Canadian Circumpolar Institute
 Canadian federal - unspecified
 Canadian Forest Products
 Canadian Landmasters Resource Services Ltd.
 Canadian National Railway
 Canadian Natural Resources Ltd.
 Canadian Nature Federation
 Canadian non-government organizations - unspecified
 Canadian Pacific
 Canadian provincial - unspecified
 Canadian Superior Energy Inc.
 Canadian - unspecified
 Canadian Water Resources Association
 Canetic Resources Trust
 Cannat Resources Inc.
 Capitol Energy Resources Ltd.
 Cargill Inc.
 Caribou Land Services
 Carlton 142 Inc.
 Carriage Lane Estates Inc.
 Carstairs (Town of)
 Cavalier Land Ltd.
 Celtic Exploration Ltd.

Cenovus Energy Inc.
 Central Alberta Rural Electrification Association
 Central Global Resources, ULC
 Centrica Canada Limited
 Challenger Development Corporation
 Chamaelo Energy
 Choice Resources Corp.
 Circle E Grazing Association
 Clear Environmental Solutions Inc.
 Climate Change Central
 Coal Valley Resources Inc.
 Coastal Resources Ltd.
 Cochise Pipe Lines Ltd.
 Colonsay No. 342 (Rural Municipality of)
 Colorado (State of)
 Commonwealth Construction Company Ltd.
 Compara Energy Services Inc.
 Complete Exploration Services Ltd.
 Complete Land Services Ltd.
 Compton Petroleum Corporation
 Conoco Phillips Canada
 Conservation International Bahamas
 Cordero Energy Inc.
 Cornerstone Agri-Environmental Group Plan
 Cossack Land Services Ltd.
 Cowie Cattle Company Ltd.
 Crescent Point Resources Limited Partnership
 Crew Energy Inc.
 Crispin Energy Inc.
 Cropmasters
 CrossAlta Gas Storage & Services Ltd.
 Crystal Landing Corporation
 Culane Energy Corporation
 Cygnet Lake Drainage District
 D.J. Old Ltd.
 Data Trek Exploration (1986) Ltd.
 Davis LLP
 Daylight Energy Ltd.
 Decker Petroleum Ltd.
 Delphi Energy Corp.
 Delta Waterfowl Foundation
 Desmarais Energy Corporation
 Devon Canada Corporation
 Dirham Construction Ltd.
 Dominion Energy Canada Ltd.
 Dow AgroSciences
 Dox Investments Inc.
 Ducks Unlimited Canada
 Ducks Unlimited Inc.
 E-Bay Oilfield Contracting Inc.
 Eastern Irrigation District
 Echoex Ltd.
 Edmonton (City of)
 Edmonton Community Foundation
 Edmonton Springer Spaniel Club
 Edwards Land (Calgary) Ltd.
 Elfros No. 307 (Rural Municipality of)
 Emerald No. 277 (Rural Municipality of)
 Enbridge Inc.
 Enbridge Pipelines Inc.
 EnCana Corporation
 ENDEV Resources Partnership
 EnerMark Inc.
 Enterra Energy Corp.
 Environment Canada - Canadian Wildlife Service
 Environment Canada - EcoAction 2000
 Environment Canada - Habitat Stewardship Program
 Environment Canada - Natural Areas Conservation Program

Environmental Law Centre	Izaak Walton Killam Memorial Scholarship	Montana (State of)
EOG Resources, Inc.	Jacqui Shumiatcher S.O.M., LL.D.	Montane Resources Ltd.
Equatorial Energy Inc.	Jaffer Real Estate Limited Partnership III Inc.	Moose Mountain Buffalo Ranch
Esprit Exploration Ltd.	James L. Baillie Memorial Fund	Mor-West Ventures Inc.
Evolve Surface Strategies Inc.	James Richardson International	Mountain Equipment Co-op
Exalta Energy Inc.	JED Oil Inc.	MSL Land Services Ltd.
ExxonMobil Canada Energy	Kanover Ltd.	Murphy Oil Company, Ltd.
Fairmount Energy Inc.	Kelkyd Holdings Ltd.	NAL Oil & Gas Trust
Federation of Alberta Naturalists	Kellross No. 247 (Rural Municipality of)	NAL Resources Limited
Federation of Saskatchewan Indian Nations	Keyera Energy Facilities Limited	National Fish and Wildlife Foundation
Feed-Rite Ltd.	KeyWest Energy Corporation	Native Plant Society of Saskatchewan
First National Properties Group	Kinder Morgan, Inc.	Natural Sciences and Engineering Research Council of Canada
Fisheries and Oceans Canada	Kinsmen Club of Yorkton	Nature Canada
Flagstaff County	Krang Energy Inc.	Nature Conservancy of Canada
Fletcher Challenge Canada Ltd.	L. Griffin Management Inc.	Nature Saskatchewan
Flexi-Coil	Lac La Biche Feed Mill & Farm Supply Ltd.	Navigo Energy Partnership
Foothills Pipe Lines Ltd.	Lacombe County	Newell County
Forest Products Association of Canada	Lakeland (County of)	Newport Petroleum Corporation
Fortis Alberta Inc.	Lakeland Industry & Community Association	Nexen Inc.
FRC Alberta Properties, Inc.	Lamco Gas Co-op Ltd.	Nicholson Land Service Ltd.
Friends of the Nature Conservancy of Canada	Lamont County	Niven & Associates Inc.
Galfour Development Corporation	Lamont Gas Co-op Ltd.	Norcan Resource Services (1991) Ltd.
Galleon Energy Inc.	Land Solutions Inc.	Nordic Pressure Services Inc.
Genstar Development Partnership	Land Stewardship Centre of Canada	North West Upgrading Inc.
Gentry Resources Ltd.	Landquest Services Ltd.	Northpoint Development L.P.
Geoid Exploration Ltd.	Landwest Resource Services Ltd.	Northrock Resources Ltd. (Canada)
George Cedric Metcalf Foundation	Lane Land Services Ltd.	NWT Resources, Wildlife and Economic Development
GeoTir Inc.	Little Saskatchewan River Conservation District	OH Ranch Ltd.
Grand Petroleum Inc.	Lockhorn Exploration Ltd.	Oil-Expo Investments Ltd.
Grande Prairie (City of)	Logistex Land Services Ltd.	Olds College
Grande Prairie County	Longstaff Land Surveying Ltd.	Omera Resources Limited
Grandir Resources Ltd.	Loose Foot Computing Limited	Omers Energy Inc.
Gray Diamond Construction	Lower Souris River Watershed Committee Inc.	Oregon (State of)
Green Drop Ltd.	Lucas Bowker & White	Outlook Energy Corporation
Green-Con Lands Ltd.	Luscar Ltd.	OutSource Seismic Consultants Inc.
Greenview (Municipal District of)	LXL Consulting Ltd.	Pan Canadian Petroleum Limited
Habitat Conservation Trust Fund	Majestic Land Services Ltd.	Pangea Land Ltd.
Habitat For Humanity	Mamba Production Partnership	Paramount Energy Trust
Harbinger Exploration Inc.	Manawan Drainage District	Park Paving Ltd.
Harvest Energy	Mancal Corporation	Park Ridge Homes Ltd.
Hasco Development Corporation	Manitoba Agriculture, Food and Rural Initiatives	Parkland Conservation Farm
Heritage Surface Solutions Ltd.	Manitoba Conservation	Parkland County
HMA Land Services Ltd.	Manitoba Finance	Parks Canada
Hopewell Development Corporation	Manitoba Forage Council	Parks Canada - Elk Island National Park
Horizon Land Services Ltd.	Manitoba Habitat Heritage Corporation	Partners in Habitat Conservation (EID)
Horseshoe Land Ltd.	Manitoba Hydro	PB Industries Ltd.
Hughes Oilfield Construction Ltd.	Manitoba Transportation and Government Services	PCL Construction Management Inc.
Human Resources and Skills Development Canada	Manitoba Water Stewardship	Peace Parkland Native Stewardship Program
Husky Group of Companies	Manitoba Wildlife Federation Habitat Foundation	Peace Parkland Naturalists
Husky Oil Operations Ltd.	Manitok Exploration Inc.	Pengrowth Corporation
Impact 2000 Inc.	Maverick Land Consultants Inc.	Penn West Petroleum Ltd.
*Imperial Oil Charitable Foundation	Maxi Services Ltd.	Petro Line Upgrade Services Ltd.
Imperial Oil Resources Ltd.	McNally Land Services Ltd.	Petro-Canada
Indian and Northern Affairs Canada	MEC Operating Company	Petrofund Corporation
Inglewood Bird Sanctuary	Medicine Hat (City of)	Petroland Services Ltd.
Inland Cement Ltd.	Meewasin Valley Authority	Petrolane Consulting Ltd.
Institute for Wetland and Waterfowl Research	Meighen Haddad & Co.	PEW Charitable Trusts
Integrated Geophysical Consultants Ltd.	Melcor Developments Ltd.	Pheasants Forever
Integrity Land Inc.	Melfort (City of)	Pickseed Canada Inc.
Inter Pipeline Fund	MGV Energy Inc.	Pioneer Land Services Ltd.
Interlake Grasslands Society	Millennium Bureau of Canada	Pioneer Professional Services Group
International Association of Fish & Wildlife Agencies	Minburn County	Ponoka County
Invermay (Rural Municipality of)	Minco Gas Co-op Ltd.	Poplar Hill Resources Ltd.
IPSCO Inc.	Ministry of Sustainable Resource Management	PotashCorp
Irene W. and C.B. Pennington Foundation	Monsanto Canada	

* New cooperator in 2013-14.

Prairie Land & Investment Services Ltd.
 Prairie Land Consultants Inc.
 Prairie Land Service Ltd.
 Prairie Mines and Royalty Ltd.
 Prairie Plantation Inc.
 Prairie Roadbuilders Limited
 Price Waterhouse Coopers
 Prime Seismic Data
 Prime West Energy Inc.
 Priority Printing
 Progress Energy Ltd.
 Progress Land Services Ltd.
 Progressive Exploration Services
 Project Second Life Society
 Prospect Land Services (Alta) Ltd.
 Prospect Oil and Gas Management Ltd.
 Public Works and Government Services Canada
 Qualico Developments
 Ranger Land Services Ltd.
 Ravenswood Developments Inc.
 RBC Royal Bank
 Real Resources Inc.
 Red Deer County
 Remington Development Corporation
 Renton Land Services (1983) Ltd.
 Resolution Land Services Ltd.
 Richard H. G. Bonnycastle Graduate Fellowship
 Richardson Foundation Inc.
 Richland Petroleum Corporation
 Rife Resources Ltd.
 Rival Energy Ltd.
 Road Runner Land Group Ltd.
 Rocky Mountain Elk Foundation – Canada
 Rocky Mountain Property, Inc.
 Rocky View County
 Rockyview Energy Partnership
 Rockyview Gas Co-op Ltd.
 Roger Hagen Construction Inc.
 Rosevear Land Services Ltd.
 Roy Northern Land Service Ltd.
 Royal Oaks II Joint Venture
 Sabretooth Energy Ltd.
 Samuel Hanen Society for Resource Conservation
 Saskatchewan Agriculture, Food and Rural Revitalization
 Saskatchewan Conservationist
 Saskatchewan Council for Community Development
 Saskatchewan Crop Insurance Corporation
 Saskatchewan Environment
 Saskatchewan Environmental Protection Fund
 Saskatchewan Finance
 Saskatchewan Fish and Wildlife Development Fund
 Saskatchewan Government Relations and Rural Affairs
 Saskatchewan Minerals
 Saskatchewan Stock Growers Association
 Saskatchewan Watershed Authority
 Saskatchewan Wetland Conservation Corporation
 Saskatchewan Wildlife Federation
 Saskatoon (City of)
 SaskEnergy Incorporated
 SaskPower
 SaskTel
 SBW Cattle Company Ltd.
 Scott Land and Lease Ltd.

Seamac Land Services Ltd.
 Search Energy Corp.
 SeCan
 Seisland Surveys Ltd.
 Serrano Energy Ltd.
 Shell Canada Products Ltd.
 Shell Conservation Internship Program
 Shell Environmental Fund
 Shepard Limited Partnership
 Shiningbank Energy Income Fund
 Sierra Vista Energy Ltd.
 Signalta Resources Limited
 Silverado Properties Ltd.
 Sims and Company
 Skana Exploration Ltd.
 Skelton and Company Law Office
 Slave Lake Pulp Corporation
 Soil Conservation Council of Canada
 South Peace Wilderness Society
 Southern Alberta Land Trust Society
 Special Areas Board
 Spur Resources Ltd.
 Spy Hill (Regional Municipality of)
 St. Albert (City of)
 St. Mary River Irrigation District
 St. Paul County
 Standard Land Company Inc.
 Star Oil & Gas
 Starboard Gas Ltd.
 Stettler County
 Strategic Land Services Inc.
 Strathcona County
 Strathmore (Town of)
 Sturgeon County
 Suncor Energy Inc.
 Sundance Forest Industries Inc.
 Sundance Land Services Ltd.
 Sunwest Canada Energy Limited
 Sustainable Forest Management Network
 Sylvan Lake (Town of)
 Synergy Land Services Ltd.
 Syngenta Crop Protection Inc.
 Synterra Technologies Ltd.
 Takota Land Ltd.
 Talisman Energy Inc.
 Tappit Resources
 Tasman Exploration Ltd.
 TD Canada Trust
 TD Friends of the Environment Foundation
 Tempest Energy Corporation
 TERA Environmental Consultants
 Terra-Sine Resources Ltd.
 The Calgary Foundation
 The Donner Canadian Foundation
 The J.W. McConnell Family Foundation
 The Kahanoff Foundation
 The Nature Conservancy
 The W. Garfield Weston Foundation
 The Woodcock Foundation
 Thompson & Associates, Inc.
 Thunder Energy Inc.
 TNC Wilson Challenge Fund
 Tofield (Town of)

Touchdown Land Consultants Ltd.
 Tourism for Tofield Foundation
 Tournament Exploration Ltd.
 TransAlta Corporation
 TransCanada Corporation
 Transfeeder Inc.
 TransGas Limited
 Traverse Landgroup Ltd.
 Trident Exploration Corp.
 Trilogy Energy Corp.
 TriStar Oil & Gas Ltd.
 Triton Energy Corporation
 True Energy Inc.
 Tudor Corporation Ltd.
 Tundra Oil and Gas, Limited
 Turtle Mountain Conservation District
 Twin Butte Energy Ltd.
 Two Hills (County of)
 Union Pacific Resources Ltd.
 United Farmers of Alberta
 United Grain Growers
 United States Department of Agriculture – Forest Service
 United States Fish and Wildlife Service
 United States state governments – unspecified
 United States – other
 University of Alberta
 University of Calgary
 University of Lethbridge
 University of Regina
 Univex Land Services
 Upper Assiniboine River Conservation District
 Val Vista Energy Ltd.
 Venturion Natural Resources Limited
 Vermilion Energy Trust
 Vermilion Resources
 Vermilion River (County of)
 Viterra
 Vonda (Town of)
 VSD Developments Corporation
 Vulcan County
 Wainwright (Municipal District of)
 WAM Development Group
 Wave Energy Ltd.
 Wayco Land Services
 Western Feedlots
 Western Irrigation District
 Westfire Energy Ltd.
 Weyerhaeuser
 Wheatland County
 Wheatland Industrial Park Inc.
 Wilburforce Foundation
 Wildlife Habitat Canada
 William H. Donner Foundation
 Winnipeg (City of)
 World Wildlife Fund Canada
 Wyoming (State of)
 Yorkton Wildlife Federation
 Yukon Department of Energy, Mines and Resources
 Zahmol Properties Ltd.
 Zapata Energy Corporation
 Zargon Energy Trust
 Zargon Oil & Gas Ltd.

North American
Wetlands
Conservation Act



Government
of Canada

Gouvernement
du Canada



Ducks Unlimited Canada
Conserving Canada's Wetlands



For more information about the **Alberta North American Waterfowl Management Plan** (Alberta NAWMP) Partnership, contact:

Michael Barr

Alberta NAWMP Coordinator
Phone/Cell: 780-608-8104
Email: m_barr@ducks.ca

Or visit abnawmp.ca

For more information about Alberta NAWMP activities, contact:

Roger Bryan

Alberta Agriculture and Rural Development
(Roger.Bryan@gov.ab.ca)

Jaimee Dupont

Nature Conservancy of Canada
(Jaimee.Dupont@natureconservancy.ca)

Glenn Gustafson

Alberta Environment and Sustainable Resource Development
(Glenn.Gustafson@gov.ab.ca)

Cathy MacKenzie

Ducks Unlimited Canada
(c_mackenzie@ducks.ca)

Suzanne Vuch

Environment Canada
(Suzanne.Vuch@EC.gc.ca)